

You will *Lake* it!





P R E S E N T



# Lake DUGAR



The 15 storey wonder  
that provides you resort like living within the city!

- **LAKE DUGAR** is located within **Chennai Corporation** limits at Ambattur.
- Just **20 minutes** from **Anna Nagar**.
- **LAKE DUGAR** is opposite **TATA COMMUNICATION** on the 120 feet road.
- **LAKE DUGAR** has a breathtaking view of the **Puzhal lake** from most of the apartments.

Lake  
DUGAR





- ~ Within **Chennai Corporation Limits**.
- ~ Right on the 120 feet **Mainroad**.
- ~ Linked by the Proposed **Monorail**.
- ~ Shops and Market within **walking distance**.
- ~ **Anna Nagar** within 20 minutes.
- ~ **Lake View** from most of the apartments.
- ~ **Lake View** decks on each floor.
- ~ Multilevel **Health club** and **Spa**.
- ~ First Floor Level **Garden**
- ~ **75%** open area with greenery.

# AMBATTUR

is the next

# ANNA NAGAR



## PRICE

- Just **10 minutes** from Anna Nagar extension, **1/3rd price** of Anna Nagar.
- Guideline value/Land prices in Ambattur have **increased by 600%** in the last 1 year.
- Prices are said to increase further in Ambattur as it is now a part of the **Chennai Corporation Limit** with Sewage and Water supply being provided by the Govt.
- You can buy a **larger apartment** in Ambattur for **lesser value** than Anna Nagar.
- Travel just 20 mins from Anna Nagar and **Save lakhs of rupees**.

## INFRASTRUCTURE

- Best of **entertainment facilities, retail, hospitals, schools and colleges** are reachable within 10-25 minutes.
- Many of the **Fortune 500** companies like **Tatas, HCL, Britannia Industries, TI Cycles of India, Dunlop, TVS** & many IT companies are located within 15-20 minutes.
- Hospitals like **Apollo(Ayanambakkam), Madras Medical Mission, Ramachandra** and many other leading hospitals are located between Ambattur & Anna Nagar and can be reached in 10-20 minutes.
- **Major retail chains** have already started opening their outlets in Ambattur.

## CONNECTIVITY

- Located on the 120 feet main road, connects Ambattur OT to **North Chennai (Redhills) & South Chennai**.
- Through Chennai bypass road, **Maduravoyil, Porur** can be reached in less than 15 minutes & **Tambaram** in 30 minutes.
- Good connectivity with **4 lane roads** help reach South (Airport Tambaram/ Vandallur) and North from Redhills to Ennore in a short time.
- Ambattur is well connected by **Electric Trains** making it easy reach to North, South & Eastern parts of Chennai.
- Through Chennai bypass, you can reach heart of city via **Elevated Express road** ( Work In Progress) connecting Maduravoyil upto Harbour in less than 30 minutes.
- Proposed **Mono Rail** is announced and Ambattur is part of the network which will connect it to other & heart of City.





**5 Routes to reach Lake DUGAR**

**Route - 1** From: ICF, Villivakkam, Padi  
**ICF → Villivakkam → Padi → Birittannia → Dunlop → Ambattur OT → RIGHT → Rakki Theatre → Lake DUGAR**

**Route - 2** From: Villivakkam, Padi  
**Villivakkam → Padi Junction → RIGHT → DRJ Hospital → Kollathur, Retteri Junction → LEFT → Perambur Redhills Road → Velammal ENG. College → LEFT → Surapet → Lake DUGAR**

**Route - 3**  
**Anna Nagar → Mogappair → RIGHT → Cherian Hospital → Ambattur Estate → Vavin → RIGHT → India Land → LEFT → MTH Road → Dunlop → Ambattur OT → RIGHT → Rakki Theatre → Lake DUGAR**

**Route - 4**  
**Koyambedu Junction → Lanson Toyota → MGR University → Chennai Bypass Service Road → Dunlop → Ambattur OT → RIGHT → Rakki Theatre → Lake DUGAR**

**Route - 5**  
**Porur → Maduravoyal junction → Chennai Bypass Service Road → India Land → LEFT → Dunlop → Ambattur OT → RIGHT → Rakki Theatre → Lake DUGAR**

Places within minutes from **Lake**  
**DUGAR**





	5-10 Mins*	15-20 Mins*	25-35 Mins*
<b>Schools</b>	<ul style="list-style-type: none"> <li>• Velammal Higher Secondary school</li> <li>• Bloomingdale School</li> <li>• Sethu Bhaskara Mat Hr. Sec. School</li> <li>• Ebenzer Marcus Hr. Sec School</li> <li>• Sri Ramakrishna School</li> <li>• Apple Kids(International pre school)</li> </ul>	<ul style="list-style-type: none"> <li>• TI School</li> <li>• RMK Inter national School</li> <li>• G.K Shetty Vidhyalaya</li> <li>• Velammal Vidhyalaya school</li> <li>• RMK International School</li> </ul>	<ul style="list-style-type: none"> <li>• ST. Johns IRS, Emmanuel Methodist Matric Hr. Sec. School</li> <li>• Vidyaniketan school • SBOA • DAV</li> <li>• Schram Acadamy School</li> <li>• Chennai Public School</li> </ul>
<b>Colleges</b>	<ul style="list-style-type: none"> <li>• Velammal Engineering College</li> <li>• Soka Ikeda College of Arts &amp; Science for Women</li> <li>• Annai Violet Arts &amp; Science College</li> </ul>	<ul style="list-style-type: none"> <li>• Bakthavatchalam College for Women</li> <li>• Chennai National College (Arts &amp; Science)</li> <li>• Sindhi College</li> </ul>	<ul style="list-style-type: none"> <li>• Sriram Eng. College • ST.Peter 's Eng. College • Veltech Engineering College • Jaya Engineering College</li> <li>• Hindu College • DG Vaishnav College</li> <li>• Savitha Dental College</li> <li>• MGR Engineering College</li> </ul>
<b>Hospitals</b>	<ul style="list-style-type: none"> <li>• MahaLakshmi Hospital</li> <li>• ESSVEE Hospital</li> <li>• Teja Hospital • OM Sakthi Hospital</li> <li>• BM Orthopaedic Hospital</li> <li>• Stedford Hospital</li> <li>• Vasan Eye Care</li> </ul>	<ul style="list-style-type: none"> <li>• Apollo Hospital</li> <li>• Indian Hospital</li> </ul>	<ul style="list-style-type: none"> <li>• Sri Ramachandra Hospital</li> <li>• Savitha Medical College</li> <li>• Madras Medical Mission</li> <li>• Sundaram Medical Foundation</li> <li>• Cherian Heart Hospital</li> <li>• Born &amp; Joint Hospital</li> </ul>
<b>Departmental Stores Shopping Centres</b>	<ul style="list-style-type: none"> <li>• Nilgiris</li> <li>• Grace Supermarket</li> <li>• Singapore Plaza</li> <li>• Reliance Fresh</li> <li>• Nallis</li> </ul>	<ul style="list-style-type: none"> <li>• Megamart</li> </ul>	<ul style="list-style-type: none"> <li>• Ampa Mall</li> </ul>
<b>Showrooms</b>	<ul style="list-style-type: none"> <li>• Samsung Showroom</li> <li>• Reebok</li> <li>• Adidas</li> <li>• Naidu Hall</li> <li>• Titan,</li> <li>• Panasonic</li> </ul>	<ul style="list-style-type: none"> <li>• Mercedes Benz Showroom</li> <li>• Maruti Showroom</li> <li>• Honda Showroom</li> <li>• Fiat Showroom</li> <li>• Hero Honda Show Room</li> </ul>	<ul style="list-style-type: none"> <li>• Tata Car showroom</li> <li>• Toyota showroom</li> </ul>
<b>Entertainment</b>	<ul style="list-style-type: none"> <li>• Rocky Theatre</li> </ul>	<ul style="list-style-type: none"> <li>• AGS</li> <li>• Rohini Theater</li> </ul>	<ul style="list-style-type: none"> <li>• PVR</li> </ul>
<b>MNCs</b>	<ul style="list-style-type: none"> <li>• TCL</li> </ul>	<ul style="list-style-type: none"> <li>• Lucas, Wheels India • Brakes India</li> <li>• TI Group • Brintania • Dunlop</li> <li>• TVS • Murugappa Group • HCL</li> <li>• Wipro • Perot Systmes</li> <li>• Americprop • India Lands</li> <li>• Brigade Systems</li> </ul>	<ul style="list-style-type: none"> <li>• DLF SEZ (Porur)</li> </ul>
<b>Other Facilities</b>	<ul style="list-style-type: none"> <li>• Reliance Petrol Bunk</li> <li>• Bharart Petrol Bunk</li> <li>• HDFC ATM</li> <li>• Axis Bank / ATM</li> </ul>	<ul style="list-style-type: none"> <li>• Shanns Hotel</li> <li>• Chennai Gate</li> <li>• Ambika Empire Hotel</li> <li>• Mariage Halls</li> </ul>	<ul style="list-style-type: none"> <li>• J.P. Hotels</li> <li>• Adyar Ananda Bhavan (A2B)</li> </ul>
<b>Transport Facilities</b>	<ul style="list-style-type: none"> <li>• Ambattur Railway Station</li> <li>• Ambattur OT Bus Terminus</li> </ul>	<ul style="list-style-type: none"> <li>• Avadi Railway Station</li> <li>• Ambattur Estate Bus Terminus</li> </ul>	<ul style="list-style-type: none"> <li>• Central Station</li> <li>• Nungambakkam Station,</li> <li>• Anna Nagar Bus Terminus</li> <li>• CMBT,</li> <li>• Thiruverkadu Bus Terminus</li> <li>• Chennai International Airport</li> </ul>
<b>Neighbourhood</b>	<ul style="list-style-type: none"> <li>• Avadi</li> <li>• Thirumullaivoyil</li> </ul>	<ul style="list-style-type: none"> <li>• Vavin</li> <li>• Korattur</li> <li>• Kolathur,</li> <li>• Villiwakkam</li> <li>• Annanagar West</li> <li>• Padi</li> </ul>	<ul style="list-style-type: none"> <li>• Annanagar East • Annanagar</li> <li>• Thiruverkadu • Aynambakkam,</li> <li>• Vanagaram • Maduravoyil • Nolambur</li> <li>• Nerkundram • Koyembedu • Porur</li> <li>• Ponnammallee • Vadpalani</li> <li>• Arumbakkam</li> </ul>

\* Approximate ideal travel time

# Highlights of *Lake* DUGAR



- Lake Dugar overlooks **Puzhal lake** , the fresh water source spread across an area of around 7.5 kms.
- Well developed shopping facilities and departmental stores, can be reached in 5 minutes (**Nilgiris, Naidu Hall, Samsung** showrooms, etc.,
- )• Most of the apartments from 5<sup>th</sup> floor in Lake Dugar have uninterrupted and panoramic view of the **lake** till the horizon.
- First building in Ambattur with **First Floor Level Garden**.



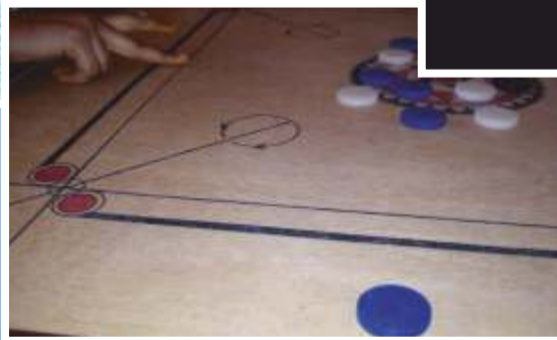
- Multi level CLUB HOUSE with **health club, Gym, Spa** and **Swimming Pool** along with Indoor games area, Party area & Open Air Theatre.
- **Tallest** Building in Ambattur.
- **Lake view deck** on each floor.
- Designed to **International** standards.
- **75%** open space with greenery.
- **Telescope** viewing deck on the terrace.
- **24 hr housekeeping** and other services available for electrical, plumbing etc.
- **Good groundwater.**
- Building elevation resembles **dew drops** of water, reflecting from Earth to Sky.
- Lake Dugar has good **Arrival and Exit Plaza.**
- Close to **Anna Nagar.** Buy a **modern and luxurious home** for lakhs here, instead of paying crores in Anna Nagar. Ambattur is going to be the next Anna Nagar.

## Lesiure Zone



- Walking Track
- Children Play Area
- Basket Ball Practice Court
- Relaxation Court
- Cricket Practice Net
- Badminton Court
- Mango Grove & Garden

## Amenities in Club House Zone & First-floor-level Garden



- GYM • Indoor Games • Multipurpose party Hall • Library
- Party Hall • Swimming Pool • Open Air Theatre • Gazebo • Water Cascade
- Jacuzi & Steam • Kids Video Gaming zone • Jogging Track • Seating Area
- Open-air Yoga Place • Landscape Garden with channel music
- Giant Chess Board (Open Air)

Lake  
DUGAR







Lake DUGAR  
LAKE DUGAR

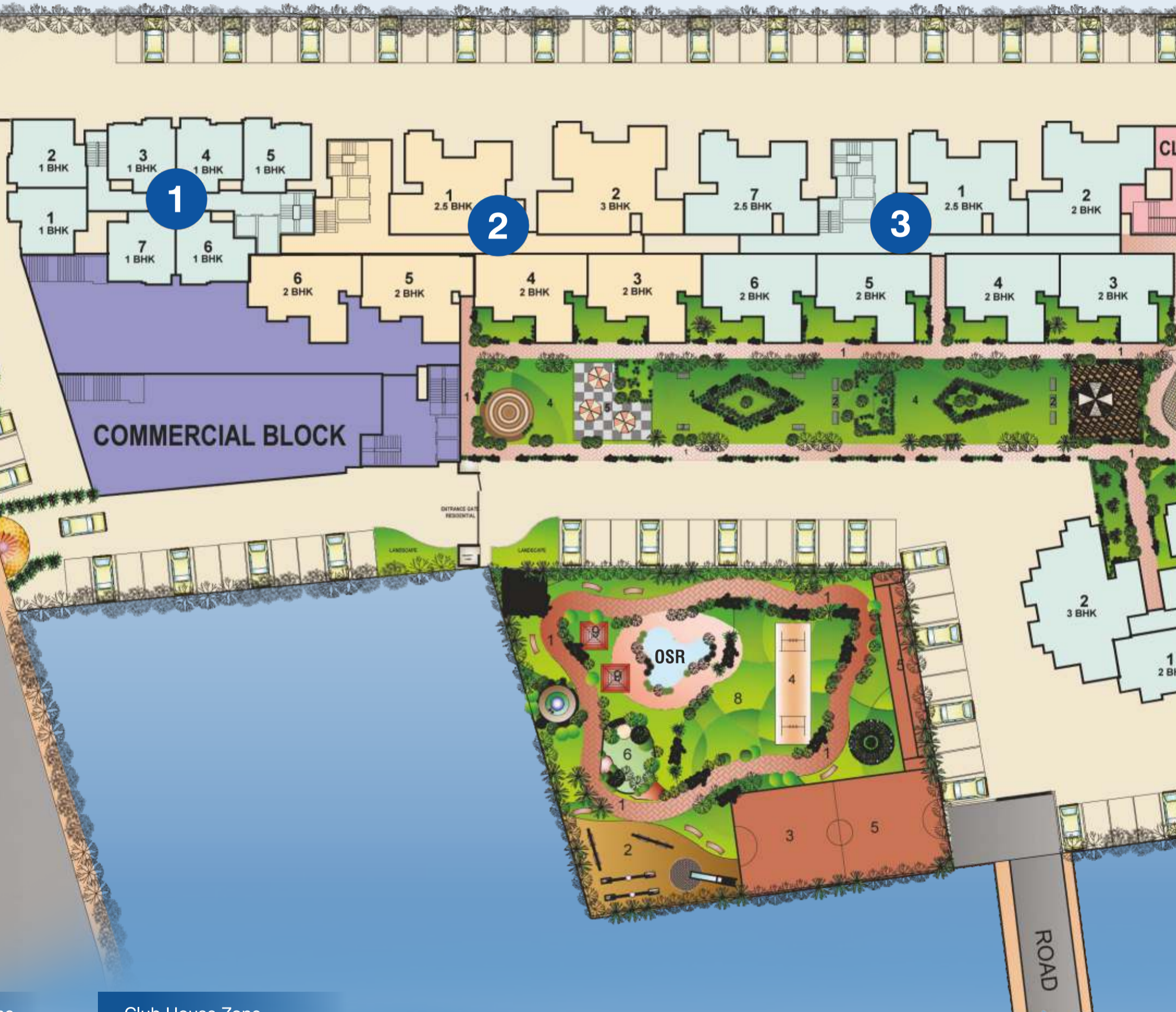




Lake  
DUGAR

View from the Main Road

# Plan



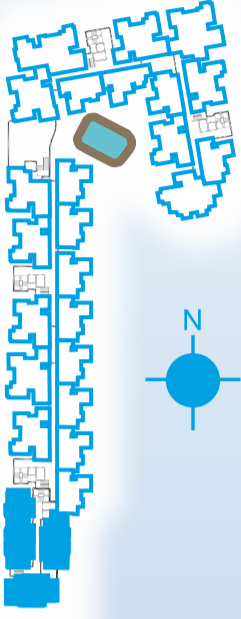
## Club House Zone

1. Gym
2. Indoor Games
3. Multipurpose cum party Hall
4. Library
6. Swimming Pool
7. Jacuzzi & Steam
8. Open Air Theatre
9. Kids' Video Gaming Zone



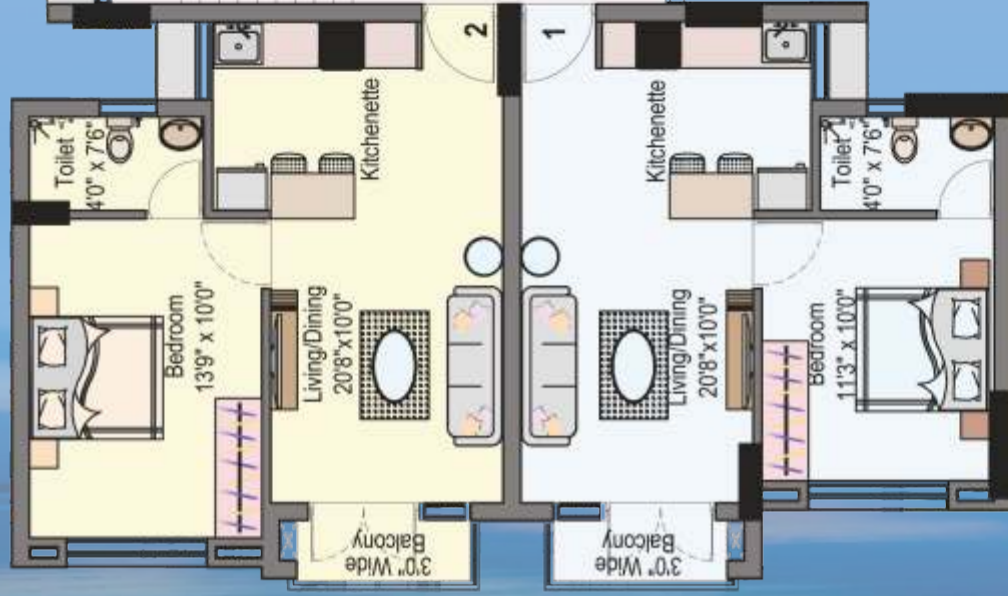
# TOWER 01

(1<sup>st</sup> TO 14<sup>th</sup> FLOOR PLAN)



**1 BHK**  
650 SFT

Flat No. 102 | 202 | 302 | 402 | 502 | 702 | 802  
902 | 1002 | 1102 | 1202 | 1302 | 1402

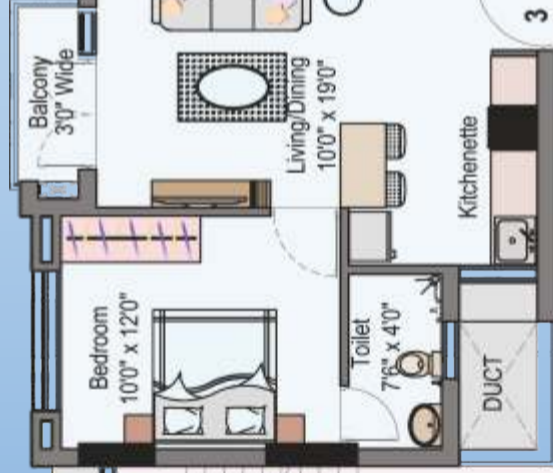


**1 BHK**  
607 SFT

Flat No. 101 | 201 | 301 | 401 | 501 | 701 | 801  
901 | 1001 | 1101 | 1201 | 1301 | 1401

**1 BHK**  
601 SFT

Flat No. 103 | 203 | 303 | 403 | 503 | 603 | 703  
804 | 904 | 1004 | 1104 | 1204 | 1304 | 1404



**1 BHK**  
594 SFT

Flat No. 104 | 204 | 304 | 404 | 504 | 604 | 704  
804 | 904 | 1004 | 1104 | 1204 | 1304 | 1404



**1 BHK**  
604 SFT

Flat No. 105 | 205 | 305 | 405 | 505 | 605 | 705  
805 | 905 | 1005 | 1105 | 1205 | 1305 | 1405



5' WIDE CORRIDOR

7' WIDE CORRIDOR

UP  
DN



**1 BHK**  
616 SFT

Flat No. 707 | 807 | 907 | 1007 | 1107  
1207 | 1307 | 1407



**1 BHK**  
634 SFT

Flat No. 706 | 806 | 906 | 1006 | 1106  
1206 | 1306 | 1406

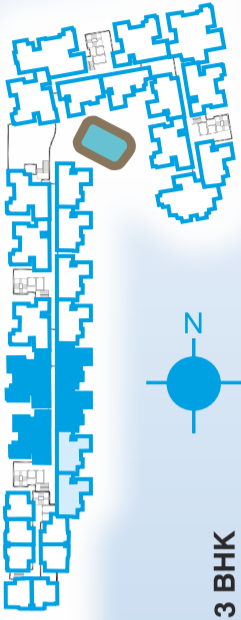


**1 BHK**  
634 SFT

Flat No. 706 | 806 | 906 | 1006 | 1106  
1206 | 1306 | 1406

# TOWER 02

(1<sup>ST</sup> TO FLOOR PLAN)



**3 BHK**  
1629 SFT + 125 SFT (PT)  
Flat No. 102

**2.5 BHK**  
1367 SFT + 149 SFT (PT)  
Flat No. 101

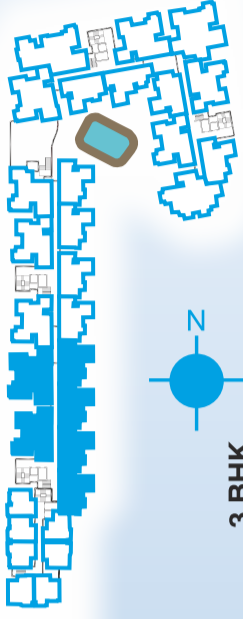


**2 BHK**  
1028 SFT + 83 SFT (PT)  
Flat No. 104

**2 BHK**  
1028 SFT + 124 SFT (PT)  
Flat No. 103

# TOWER 02

(2<sup>nd</sup> TO 14<sup>th</sup> FLOOR PLAN)



## 3 BHK

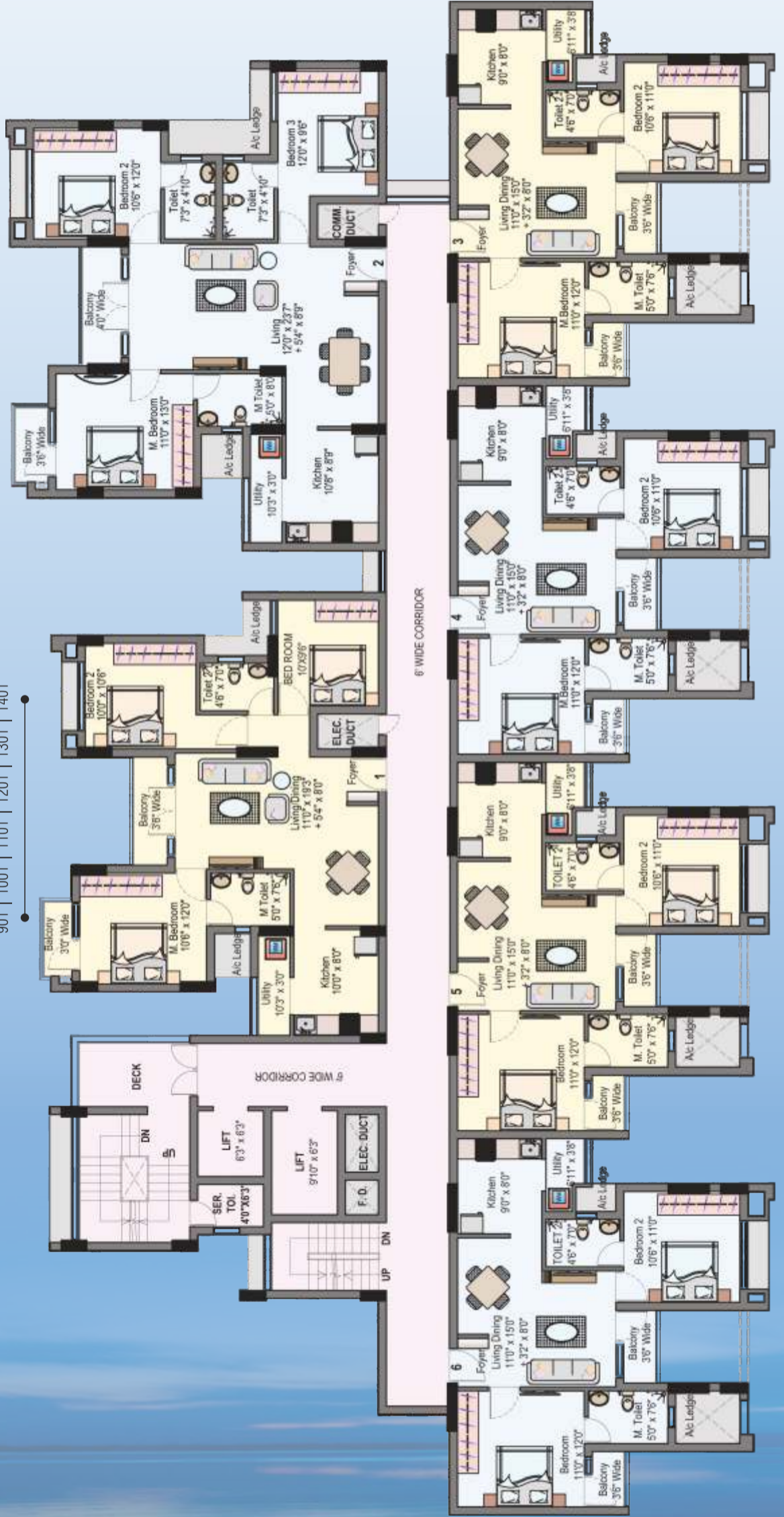
1629 SFT

Flat No. 202 | 302 | 402 | 502 | 602 | 702 | 802  
902 | 1002 | 1102 | 1202 | 1302 | 1402

## 2.5 BHK

1367 SFT

Flat No. 201 | 301 | 401 | 501 | 601 | 701 | 801  
901 | 1001 | 1101 | 1201 | 1301 | 1401



## 2 BHK

1019 SFT

Flat No. 606 | 706 | 806 | 906 | 1006 | 1106  
1206 | 1306 | 1406

## 2 BHK

1021 SFT

Flat No. 605 | 705 | 805 | 905 | 1005 | 1105  
1205 | 1305 | 1405

## 2 BHK

1028 SFT

Flat No. 204 | 304 | 404 | 504 | 604 | 704 | 804  
904 | 1004 | 1104 | 1204 | 1304 | 1404

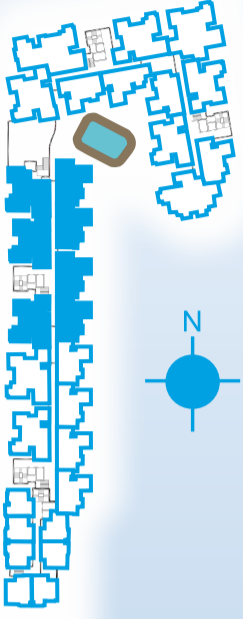
## 2 BHK

1028 SFT

Flat No. 203 | 303 | 403 | 503 | 603 | 703 | 803  
903 | 1003 | 1103 | 1203 | 1303 | 1403

# TOWER 03

(1<sup>st</sup> FLOOR PLAN)



**2 BHK**  
1347 SFT + 32 SFT (PT)  
Flat No. 102

**2.5 BHK**  
1361 SFT + 56 SFT (PT)  
Flat No. 101

**2.5 BHK**  
1366 SFT + 66 SFT (PT)  
Flat No. 107



**2 BHK**  
1028 SFT + 124 SFT (PT)  
Flat No. 103

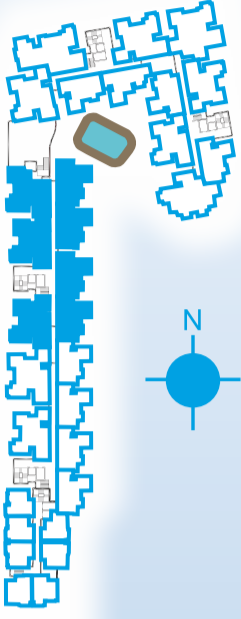
**2 BHK**  
1028 SFT + 83 SFT (PT)  
Flat No. 104

**2 BHK**  
1028 SFT + 124 SFT (PT)  
Flat No. 105

**2 BHK**  
1028 SFT + 124 SFT (PT)  
Flat No. 106

# TOWER 03

(2<sup>nd</sup> TO 4<sup>th</sup> FLOOR PLAN)



**2 BHK**  
1347 SFT

Flat No. 202 | 302 | 402

**2.5 BHK**  
1361 SFT

Flat No. 201 | 301 | 401

**2.5 BHK**  
1366 SFT

Flat No. 207 | 307 | 407



5' WIDE CORRIDOR

6' WIDE CORRIDOR

**2 BHK**  
1028 SFT

Flat No. 206 | 306 | 406

**2 BHK**  
1028 SFT

Flat No. 205 | 305 | 405

**2 BHK**  
1028 SFT

Flat No. 204 | 304 | 404

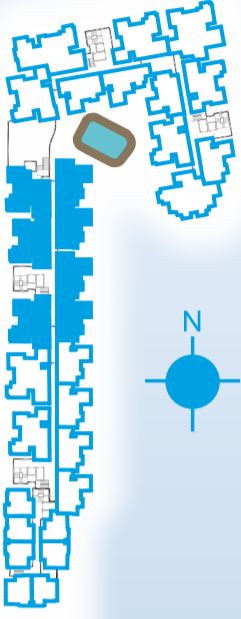
**2 BHK**  
1028 SFT

Flat No. 203 | 303 | 403



# TOWER 03

(5<sup>th</sup> TO 14<sup>th</sup> FLOOR PLAN)



## 3 BHK

1623 SFT

Flat No. 502 | 602 | 702 | 802 | 902 | 1002  
1102 | 1202 | 1302 | 1402

## 2.5 BHK

1361 SFT

Flat No. 501 | 601 | 701 | 801 | 901 | 1001  
1101 | 1201 | 1301 | 1401

## 2.5 BHK

1366 SFT

Flat No. 507 | 607 | 707 | 807 | 907 | 1007  
1107 | 1207 | 1307 | 1407



## 2 BHK

1028 SFT

Flat No. 503 | 603 | 703 | 803 | 903 | 1003  
1103 | 1203 | 1303 | 1403

## 2 BHK

1028 SFT

Flat No. 504 | 604 | 704 | 804 | 904 | 1004  
1104 | 1204 | 1304 | 1404

## 2 BHK

1028 SFT

Flat No. 505 | 605 | 705 | 805 | 905 | 1005  
1105 | 1205 | 1305 | 1405

## 2 BHK

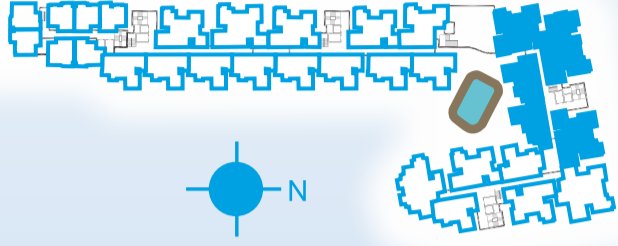
1028 SFT

Flat No. 506 | 606 | 706 | 806 | 906 | 1006  
1106 | 1206 | 1306 | 1406



# TOWER 04

(1<sup>ST</sup> FLOOR PLAN)



**2 BHK**  
1050 SFT  
Flat No. 102

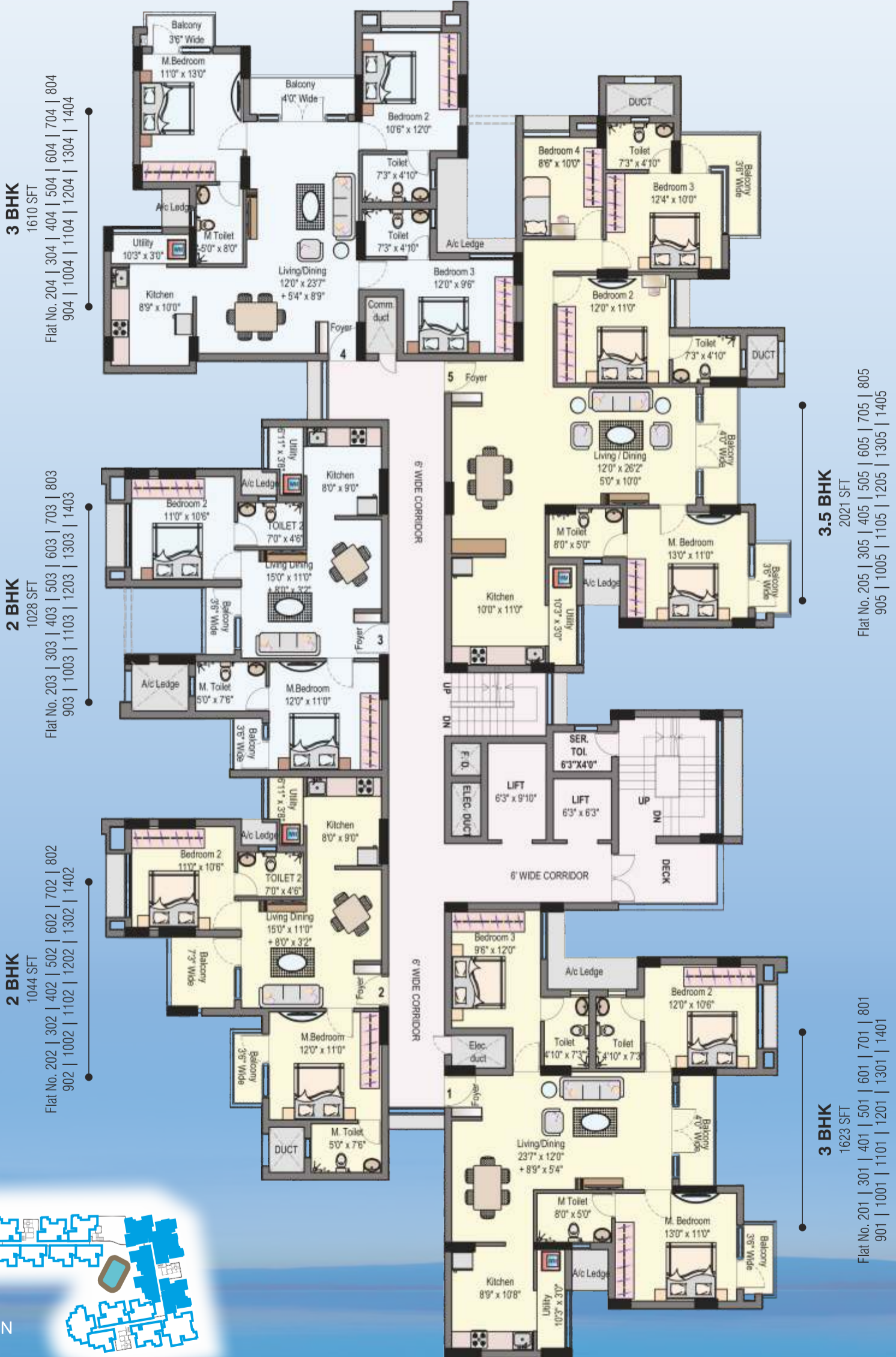
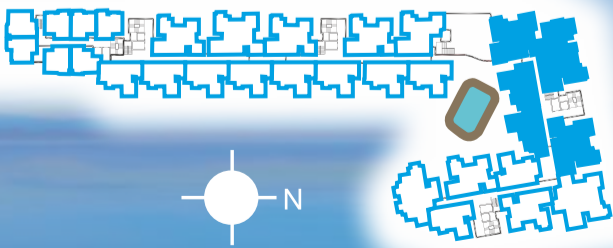


**3.5 BHK**  
2022 SFT + 87 SFT (PT)  
Flat No. 105

**3 BHK**  
1623 SFT + 33 SFT (PT)  
Flat No. 101

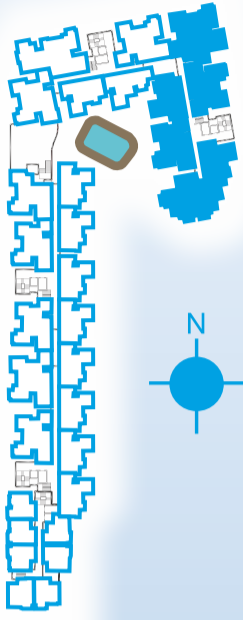
# TOWER 04

(2<sup>nd</sup> TO 14<sup>th</sup> FLOOR PLAN)



# TOWER 05

(1<sup>ST</sup> FLOOR PLAN)



**3 BHK**  
1674 SFT + 69 SFT (PT)  
Flat No. 102

**2.5 BHK**  
1359 SFT + 56 SFT (PT)  
Flat No. 103

**2 BHK**  
1044 SFT  
Flat No. 104



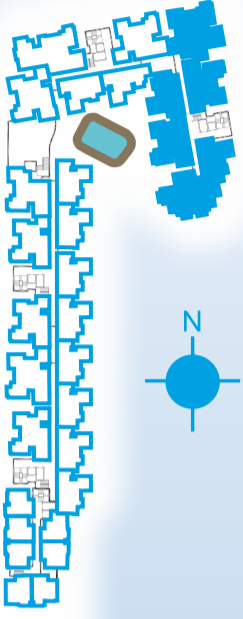
**2 BHK**  
1028 SFT + 57 SFT (PT)  
Flat No. 101

**2.5 BHK**  
1359 SFT + 56 SFT (PT)  
Flat No. 106

**3.5 BHK**  
1958 SFT  
Flat No. 105

# TOWER 05

(2<sup>nd</sup> TO 14<sup>th</sup> FLOOR PLAN)



## 3 BHK

1674 SFT

Flat No. 202 | 302 | 402 | 502 | 602 | 702 | 802  
902 | 1002 | 1102 | 1202 | 1302 | 1402

## 2.5 BHK

1359 SFT

Flat No. 203 | 303 | 403 | 503 | 603 | 703 | 803  
903 | 1003 | 1103 | 1203 | 1303 | 1403

## 2 BHK

1044 SFT

Flat No. 204 | 304 | 404 | 504 | 604 | 704 | 804  
904 | 1004 | 1104 | 1204 | 1304 | 1404



## 2 BHK

1028 SFT

Flat No. 201 | 301 | 401 | 501 | 601 | 701 | 801  
901 | 1001 | 1101 | 1201 | 1301 | 1401

## 2.5 BHK

1359 SFT

Flat No. 206 | 306 | 406 | 506 | 606 | 706 | 806  
906 | 1006 | 1106 | 1206 | 1306 | 1406

## 3.5 BHK

1958 SFT

Flat No. 205 | 305 | 405 | 505 | 605 | 705 | 805  
905 | 1005 | 1105 | 1205 | 1305 | 1405

# TYPICAL 3 BHK 3D VIEW



# TYPICAL 2 BHK 3D VIEW



## APARTMENT SPECIFICATIONS

Structure:	RCC framed structure. Outer wall 8" thick block and internal partition wall of 4" thick block.	
Wall finishes:	Internal walls/Ceiling	: Putty with Interior Emulsion Paint.
	External walls	: Exterior Emulsion paint.
Floor finishes:	Living & Dining, Bedrooms, Balcony, Kitchen – Vitrified tiles. Utility & Toilets Floor – Ceramic tiles.	
Joineries:	Main Door	: Teakwood frame with panelled skin shutter
	Bedroom & Toilet Doors	: Treated wood frames with flush shutters paint finish
	French Doors	: UPVC / Aluminum with shutters
	Windows	: UPVC / Aluminum with shutters
Toilets:	Wall tiles upto 7'-0" height. EWC's & Wash basins (White Colour). CP Fittings.	
Kitchen & Utility:	Polished granite counter top with 2'-0" height tiles above platform. Stainless steel sink.	
Electrical:	Flame guard copper concealed wires with switches and sockets-Anchor Roma or Equivalent. MCB equipped distribution board with 3 phase power supply.	

## COMMON AREAS SPECIFICATIONS

Staircase & lobby flooring with Granite tile.  
Car park & Driveways paver blocks.

## WATER SUPPLY & SEWAGE

Bore Wells.  
Underground Sumps.  
Over Head Tank.  
Rainwater Harvesting Systems (RWH).  
Sewage Treatment Plant.

## LIFE STYLE/FITNESS/RECREATIONAL FACILITIES

Out Door Games: Badminton Court | Cricket Practice Net | Basket Ball Practice Court  
In Door Games: Carom | Chess | Table Tennis  
Club House Area: Swimming Pool | Spa | Open Air Party Area | Gymnasium | Open Air Theatre  
Children Play Area | Multi Purpose Hall | Walking Track | Landscaping | Campus Lighting

## COMMON FEATURES AND OTHER FACILITIES

Piped Gas Connection | Security / CCTV / Intercom | Passenger Lift – 2 Nos per Tower | Fire Fighting System  
Generator for Common Area | Generator Partial Back up for Apartments on request

2500000 sq.ft.  
**MORE**

in the

**25**<sup>th</sup>  
year



**Sri T Padam Dugar** - Managing Director

**Sri N Tarachand Dugar** - Chairman

Dear Home buyer,

We strongly urge you to consider making Lake Dugar your home. In our opinion Ambattur will be the next Anna Nagar. You can **save several lakhs of rupees** by being less than 20 minutes from Anna Nagar. We are sure that the comfort, connectivity and the value appreciation that Lake Dugar offers will be appreciated by your family in future. **We welcome you to the Dugar family.**

By delivering Homes consistently for the past **24 years**, we are happy to have established our self as one of the Key players in the Chennai real estate market. Years of interaction with several thousand customers have given us the ability to anticipate their needs. A combination of sound marketing strategy and stringent quality standards has ensured that Dugar has always exceeded the expectations of our customer. We aspire to be the bench mark of the Industry by offering a little more than what is expected by our customers.

With all the encouragement and support over the last 24 years, Dugar Homes is proud to announce 25 lakhs sq.ft. more of beautifully planned residential living space during this **Silver Jubilee Year.**

Yours sincerely,

**T Padam Dugar**  
Managing Director

## Why Dugar Homes?

Greams Dugar



Dugar MME Gold City



Keshav Dugar



Dugar Estate



Sky Dugar



Dugar Enclave

**Why** do people take pride in owning a Dugar home?

**Why** do people queue up to book when Dugar launches a project? Right from PARK DUGAR in 1987 - Chennai's FIRST gated community of 150 houses.

**Why** was National TV showing country's FIRST 'affordable' homes - GOLD CITY in 2008 getting sold out on the very first day?

**Why** do Dugar customers keep coming back to buy homes for their family and friends?

**'Why'** itself is the answer! For the last 24 years we at Dugar have been asking **why**. We ask the market **why**. We ask ourselves **why**. And then we understand **'Why'**! And our customers respond with a delightful **'Why, of course'!**





 **Homes** with a little more...



**LOCATION:** Ambattur - Puzal Road, Opp.: Tata Communications Limited,  
Ambattur, Chennai - 600 053.

---

**REGD. OFFICE:** DUGAR HOUSING LIMITED, Dugar Towers, 7th Floor, 123, Marshalls Road,  
Egmore (Opp. Rajaratnam Stadium) Chennai 600 008 INDIA Ph: +91 44 28587878  
Email: myhome@dugar.in Website: www.dugar.in



Disclaimer : All measurements are approximate and illustrations are artist impressions only. Specifications and plans contained herein are subject to variations, modifications and substitution as may be required by the authorities or recommended by the project consultants and cannot form part of an offer or contract. All statements are believed to be correct at the time of printing this brochure but are not to be regarded as statements or representations of fact. Whilst every reasonable care has been taken while preparing the brochure, the developers and its agents cannot be held responsible for any inaccuracy in its contents. This does not constitute a legal statement. The sizes of the apartments mentioned are super built up area which includes common areas.